

Rietvlei Catchment Pics

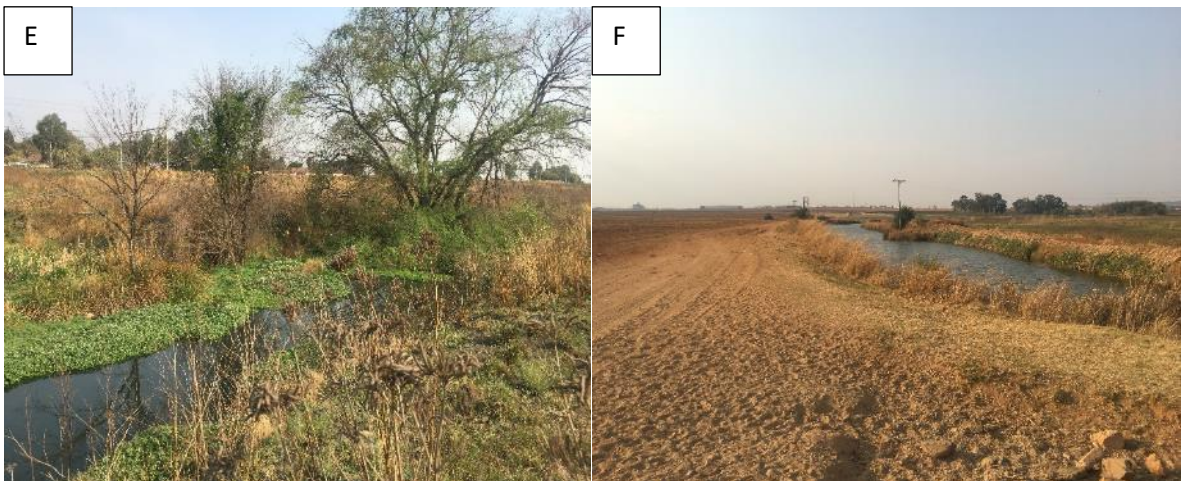
HGM 1.1

Photographs of Scenery



Figure 1: Photographs indicating typical watercourses/wetlands

Photographs of Impacts recorded



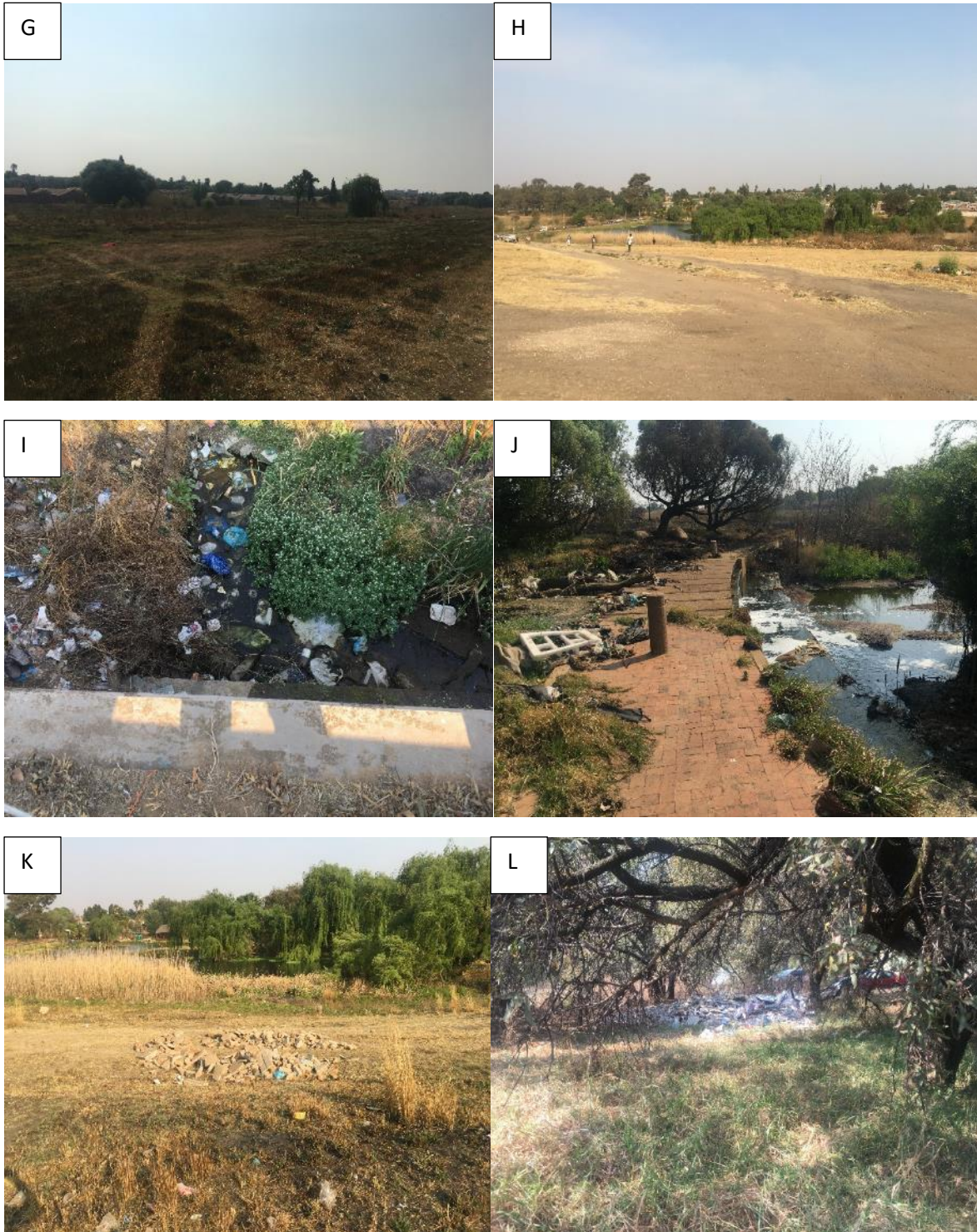


Figure 2: Photographs indicating impacts recorded (informal crossings, burnt grass, erosion, water weeds /hyacinth, agriculture activities, walk/driveways, litter dumping, debris dumping)

Photographs of existing wetlands rehabilitation interventions



Figure 3: Photographs indicating existing wetland rehabilitation interventions (gabions, fencing off)

HGM 2.3

Photographs of Scenery



Figure 4: Photographs indicating scenery

Photographs of Impacts recorded





Figure 5: Photographs indicating impacts observed (veld fire, traces of sewerage, water hyacinth, erosion, informal crossings or vehicle driving)

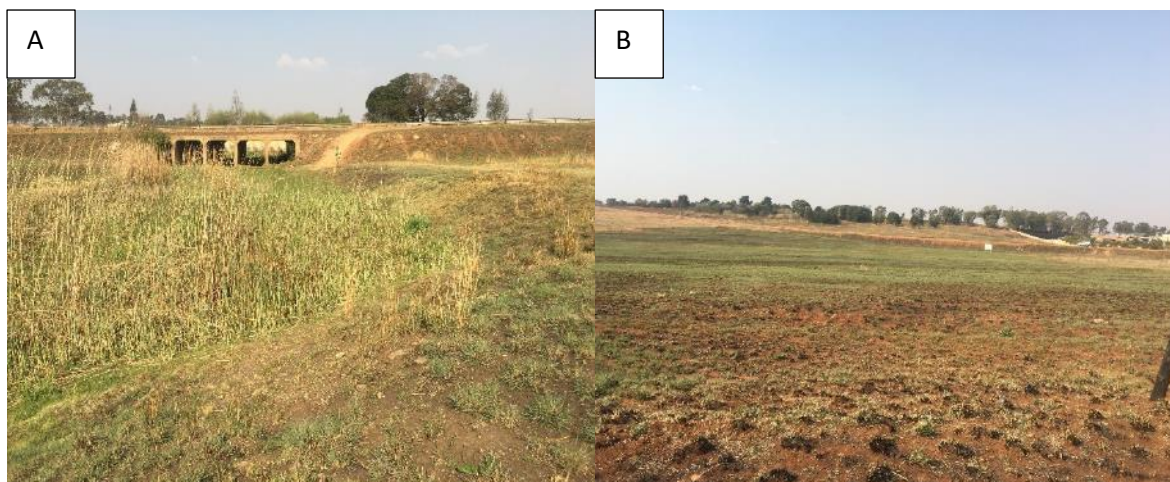
HGM 4.1

Photographs of Scenery



Figure 6: Photographs of scenery

Photographs of Impacts recorded



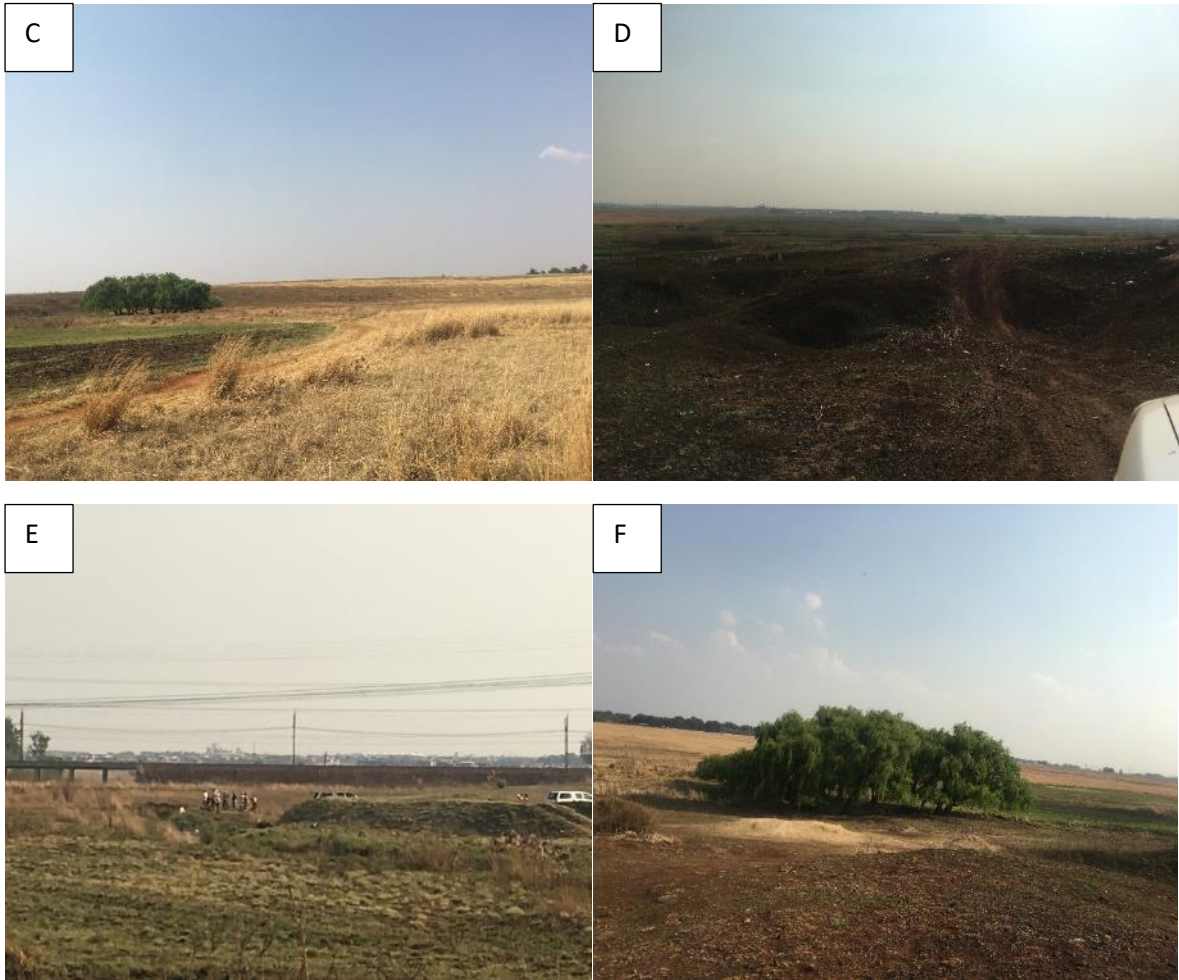


Figure 7: Photographs of impacts observed onsite (veld fires, vehicles tracks, litter dumping, religious activities, sand /building material abstraction)

Photographs of existing wetlands rehabilitation interventions



Figure 8: Photographs of existing wetland rehabilitation interventions (surrounding /fencing of the area)

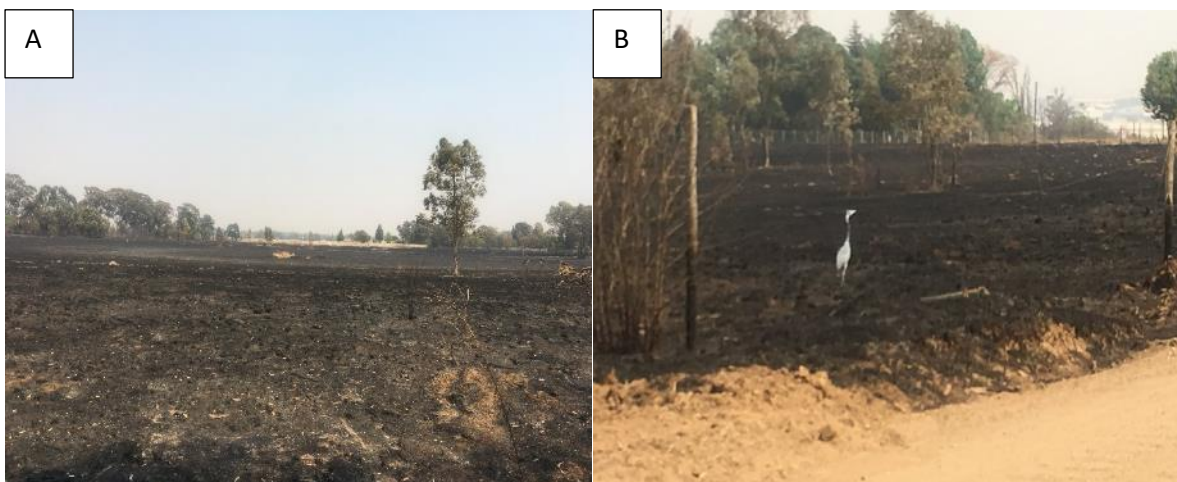
HGM 4.2

Photographs of Scenery



Figure 9: Photographs of scenery

Photographs of Impacts recorded





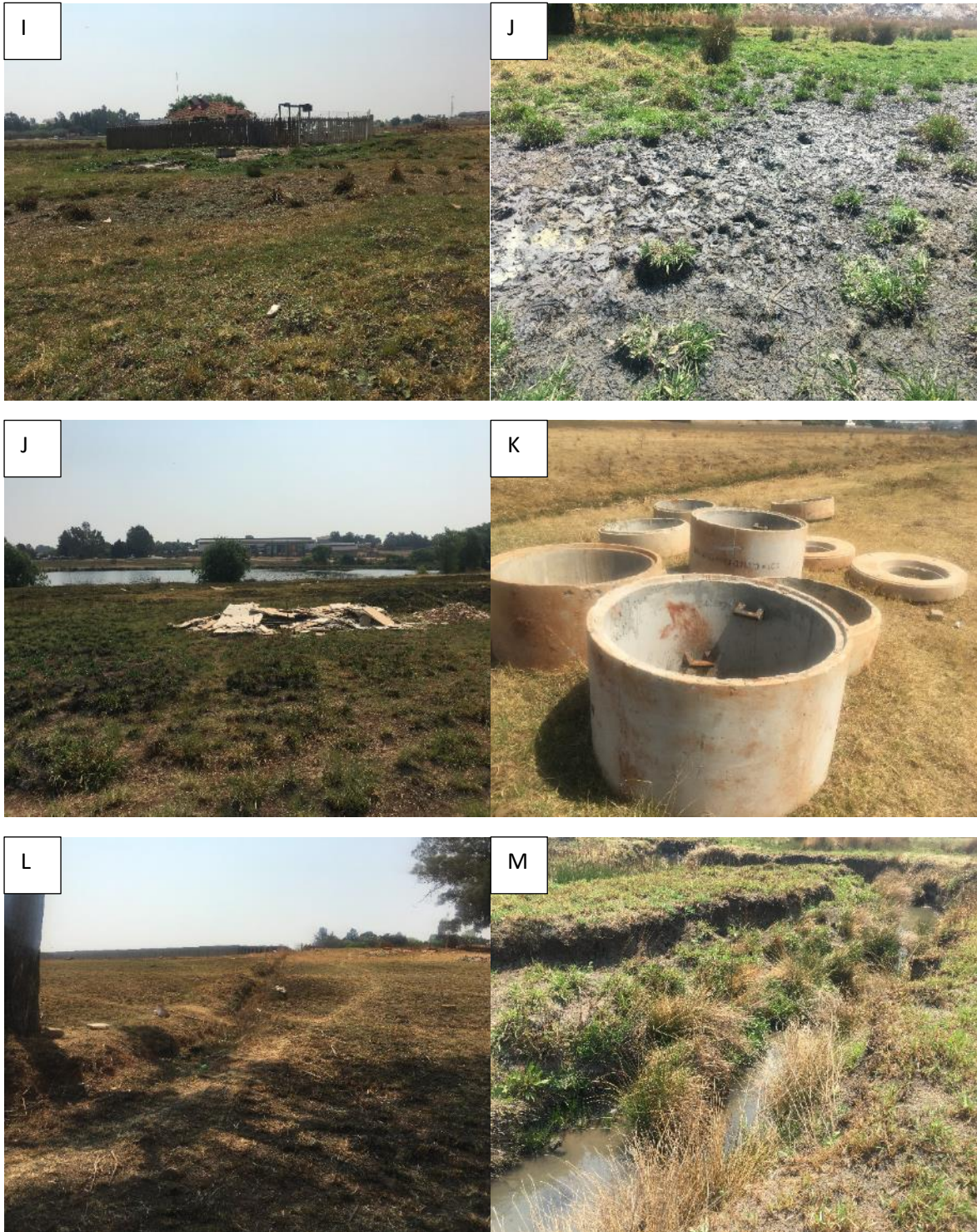


Figure 10: Photographs of impacts observed (veld fires, water weeds, livestock grazing, informal crossings/vehicle tracks, sewage from sewer pump house, rubble /building material mounts, trench and erosion)

Photographs of existing wetlands rehabilitation interventions



Figure 11: Photographs of existing wetland rehabilitation interventions (fencing off)

HGM 4.3

Photographs of Scenery

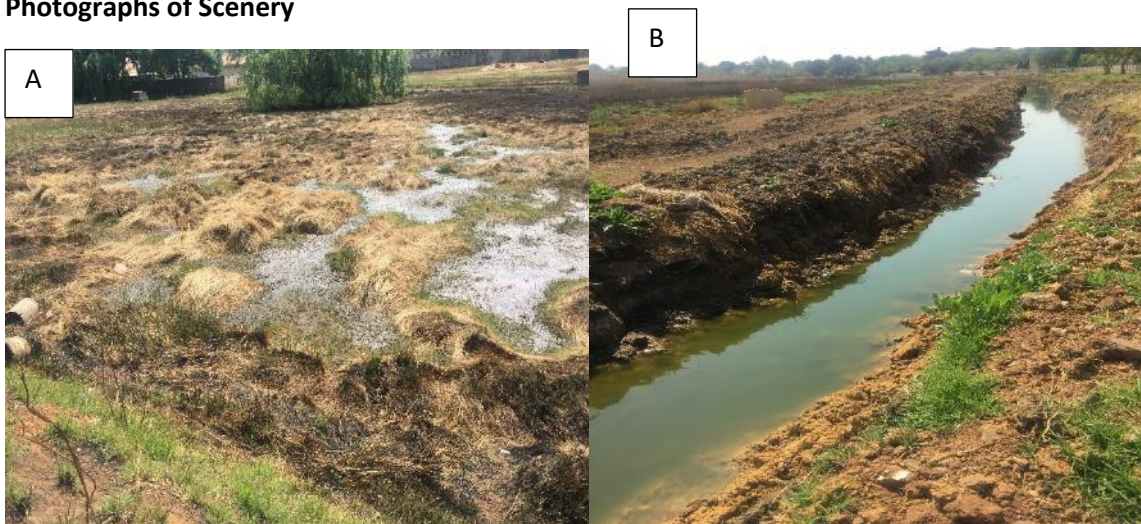


Figure 12: Photographs of scenery

Photographs of Impacts recorded



Figure 13: Photographs of impacts observed (informal crossings, veld fires)