

Figure 1: Rietvei Catchment locality

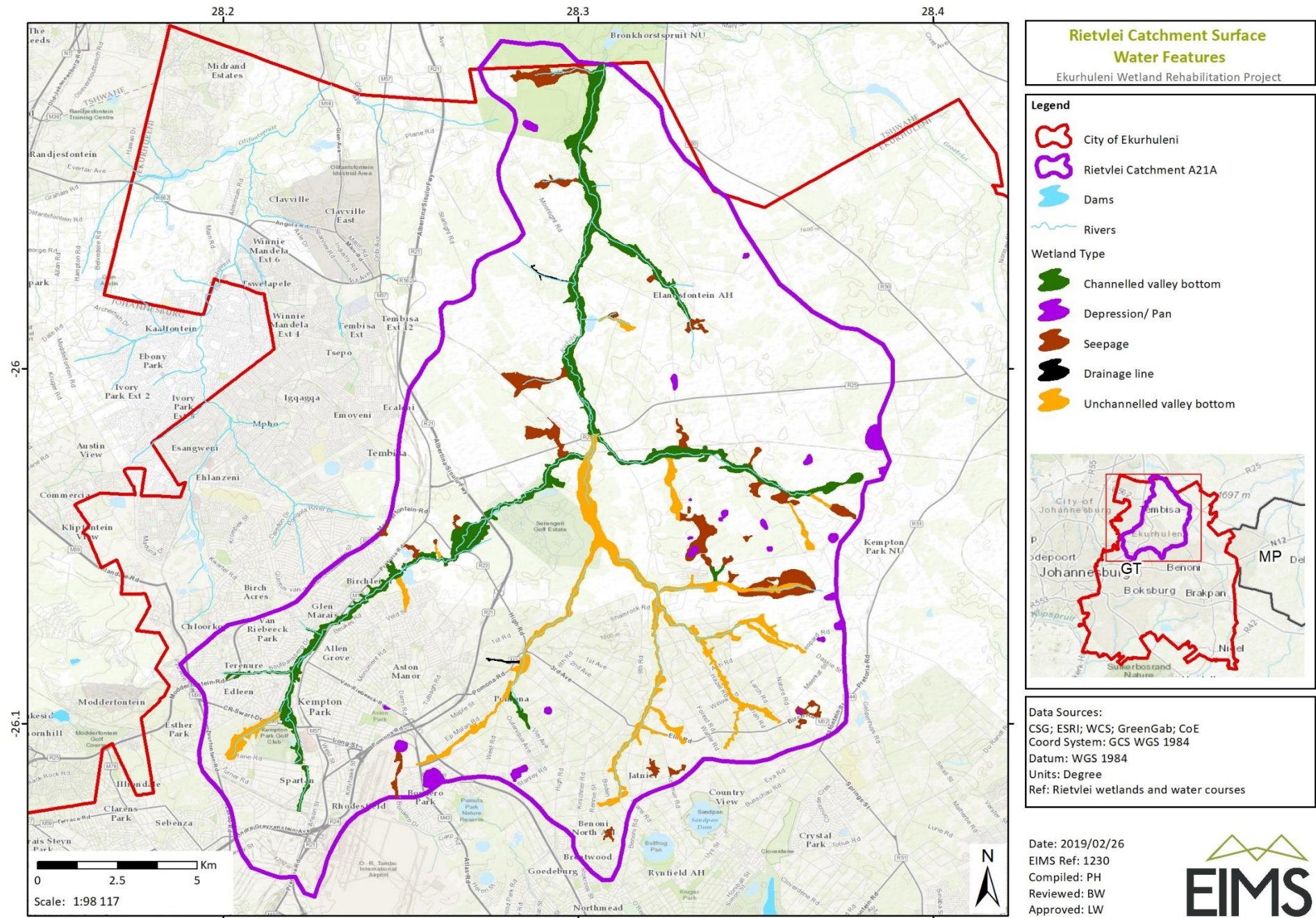
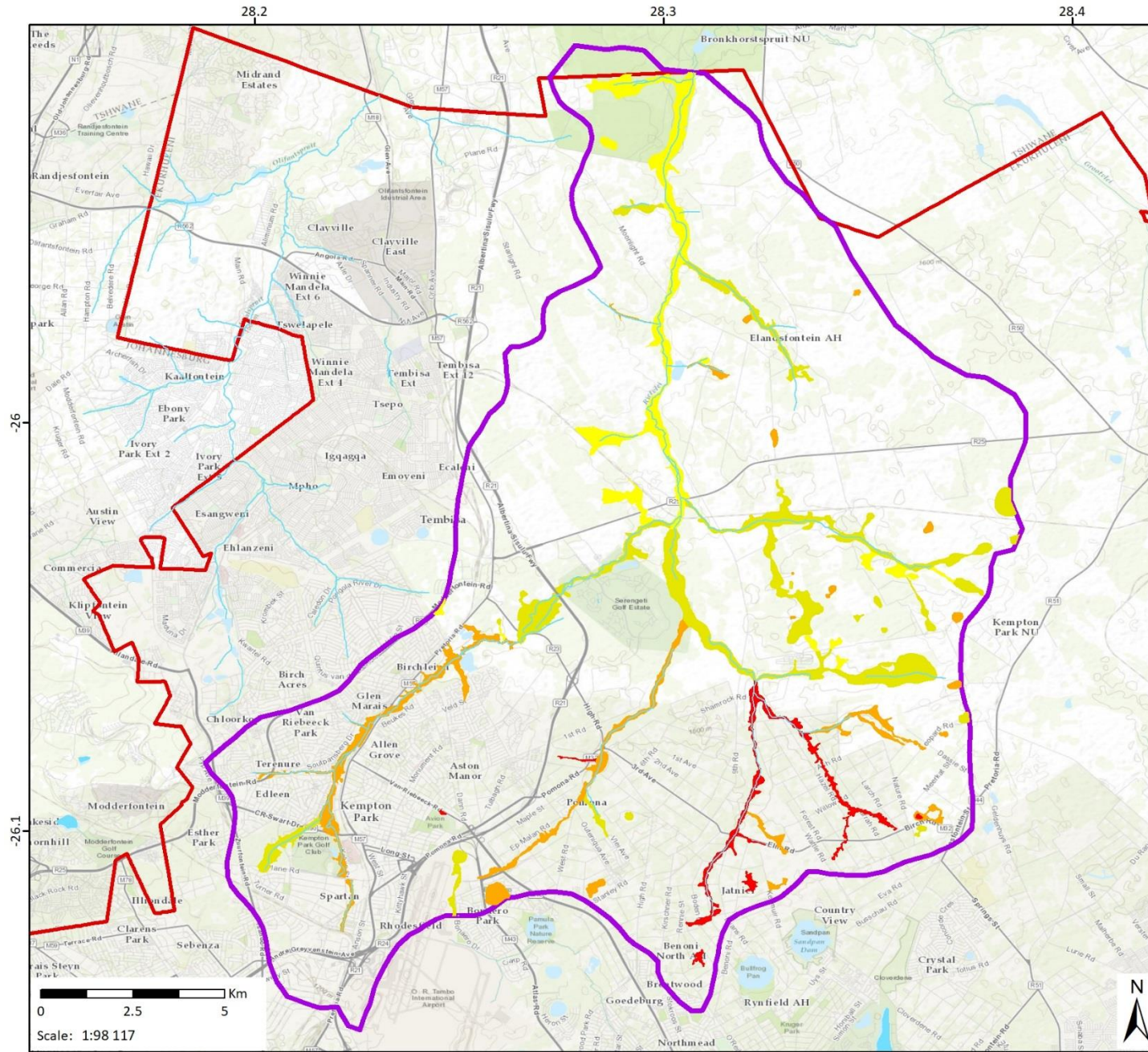


Figure 2: Wetlands and watercourses areas within the Rietvlei Catchment



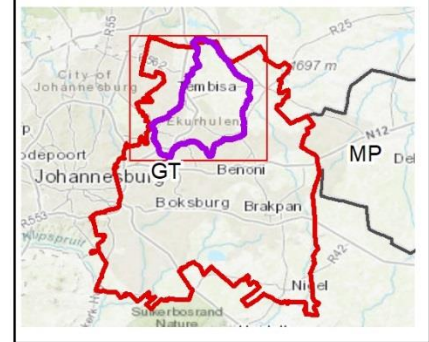
**Rietvlei Catchment Wetlands  
PES Assessment Results**  
Ekurhuleni Wetland Rehabilitation Project

**Legend**

- City of Ekurhuleni
- Rietvlei Catchment A21A
- Dams
- Rivers

**Present Ecological State**

- C
- D
- E
- F



**Data Sources:**  
CSG; ESRI; WCS; GreenGab; CoE  
**Coord System:** GCS WGS 1984  
**Datum:** WGS 1984  
**Units:** Degree  
**Ref:** Rietvlei catchment Wetlands PES

Date: 2019/02/26  
EIMS Ref: 1230  
Compiled: PH  
Reviewed: BW  
Approved: LW



Figure 3: PES assessment results for wetlands within the Rietvlei Catchment

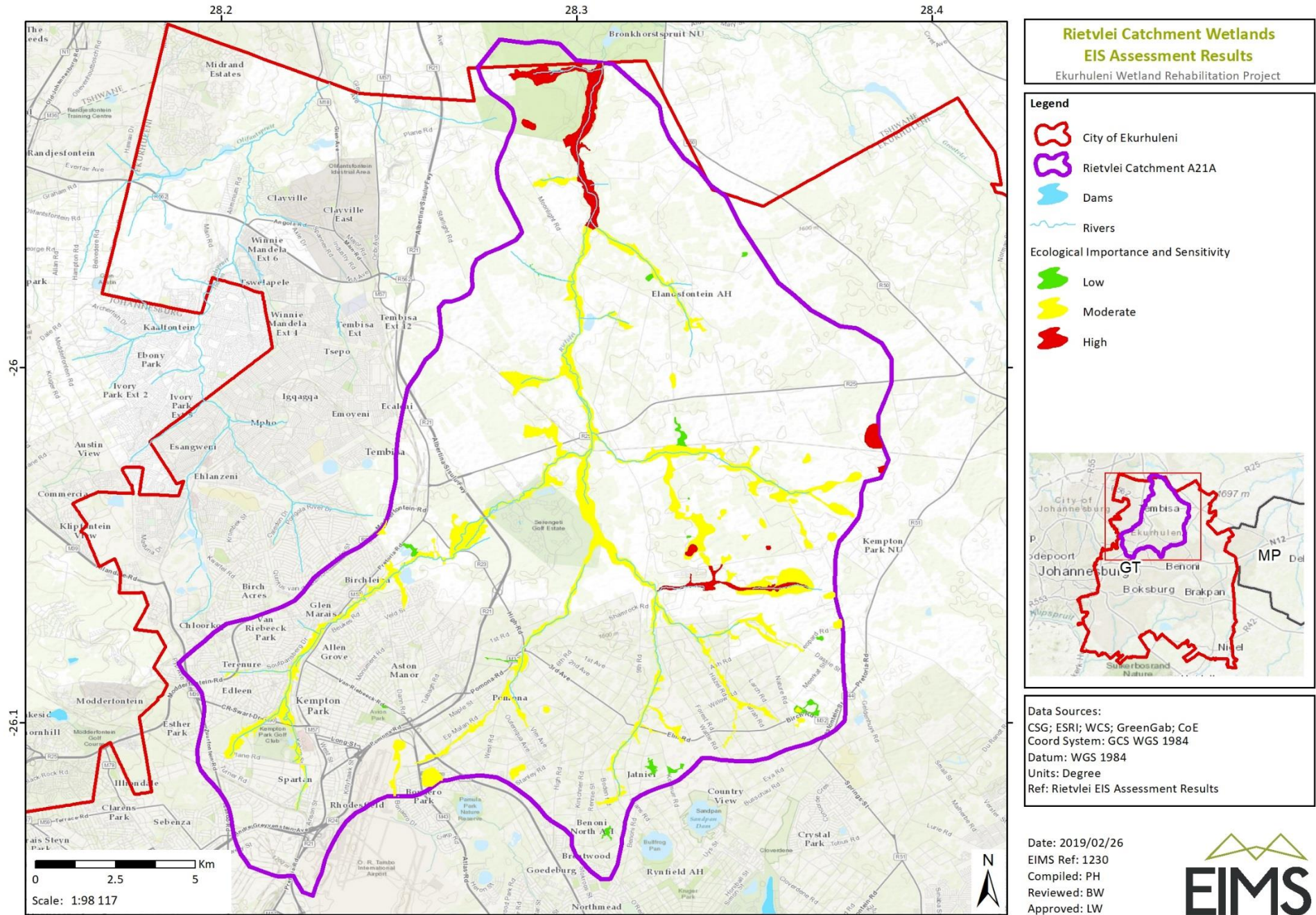


Figure 4: Wetland EIS assessment results for wetlands within the Rietvlei Catchment

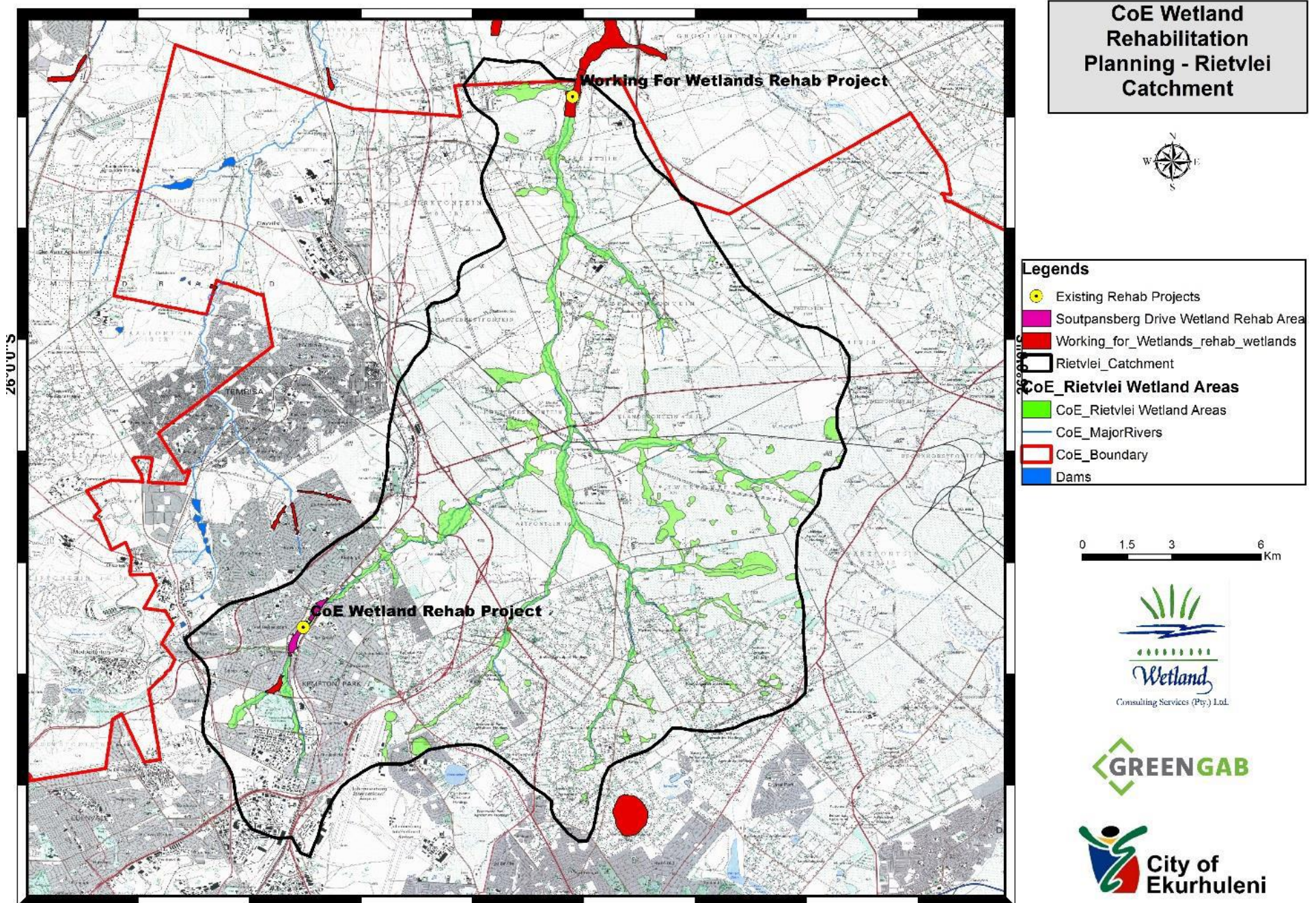
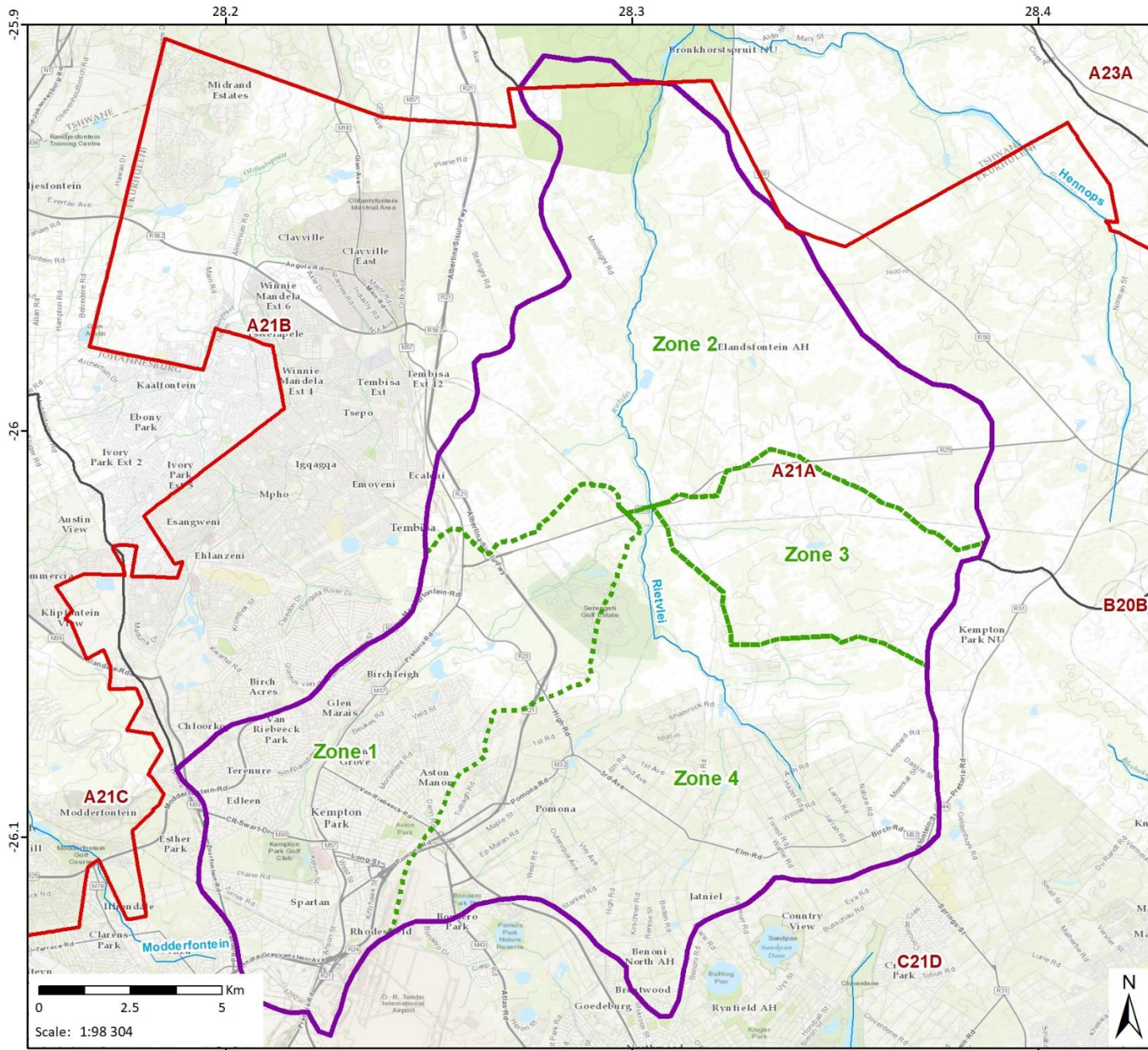


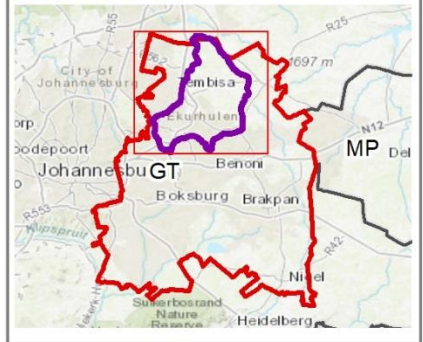
Figure 5: Existing rehabilitation initiatives within the Kaalspruit Catchment





**Reitvei Rehabilitation Zones**  
Ekurhuleni Wetland Rehabilitation Project

- Legend**
- City of Ekurhuleni
  - Rietvei Catchment (A21A)
  - Rietvei Rehabilitation Zones
  - Quaternary Catchments
  - Rivers

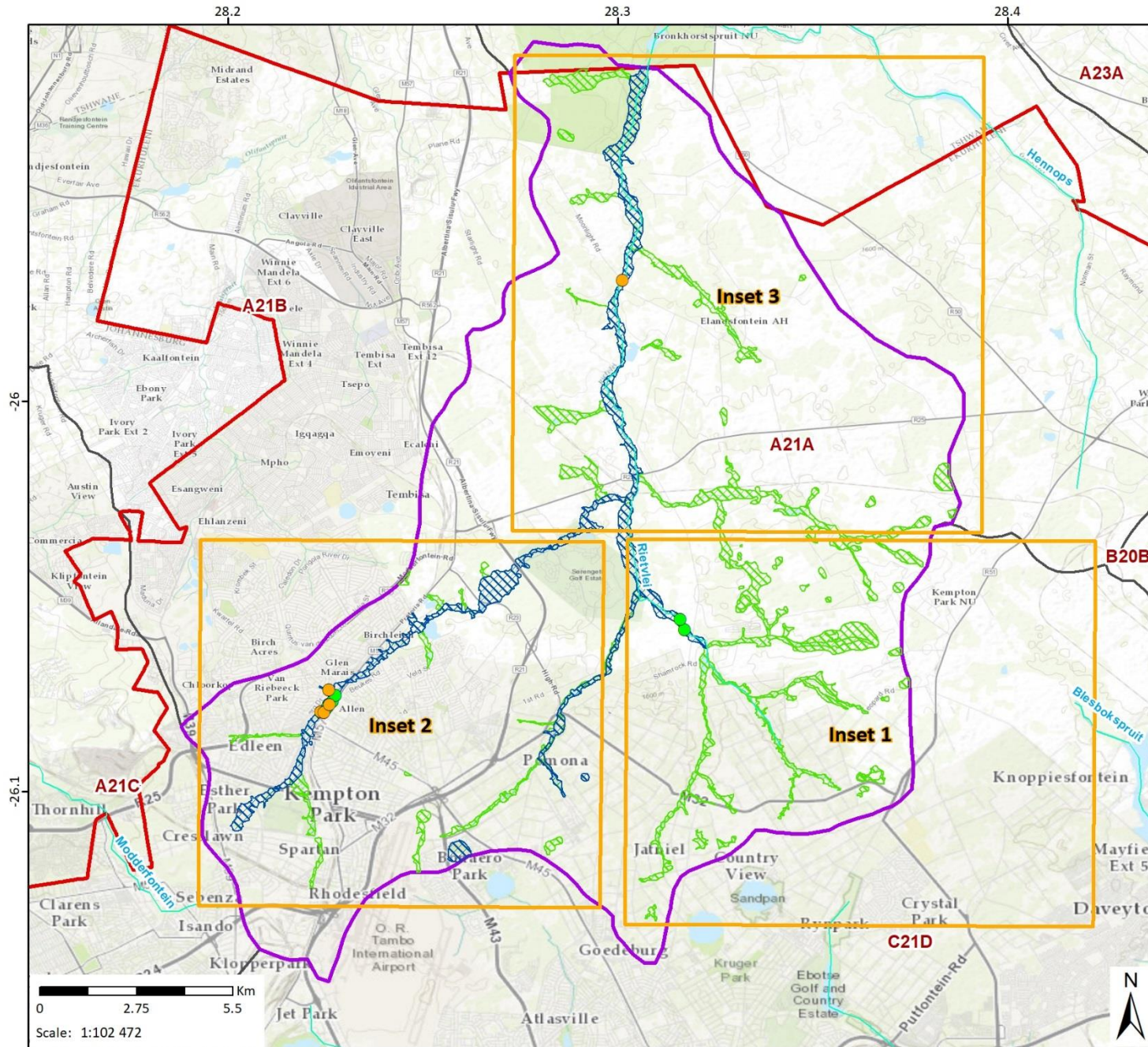


Data Sources:  
CSG; ESRI; WCS; GreenGab; CoE  
Coord System: GCS WGS 1984  
Datum: WGS 1984  
Units: Degree  
Ref: Rietvei Rehabilitation Zones

Date: 2019/02/26  
EIMS Ref: 1230  
Compiled: PH  
Reviewed: BW  
Approved: LW

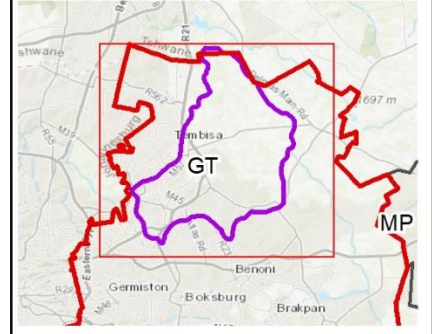


Figure 7: Rehabilitation zones for the wetlands to be considered for rehabilitation planning



**Rietvlei Catchment Existing and Proposed Structures (Overview)**  
Ekurhuleni Wetland Rehabilitation Project

- Legend**
- City of Ekurhuleni
  - Rietvlei Catchment A21A
  - Insets
  - Rietvlei Wetland Areas
  - Rietvlei Targeted Wetland Areas
  - Rivers
  - Existing Structures
  - Proposed Structures



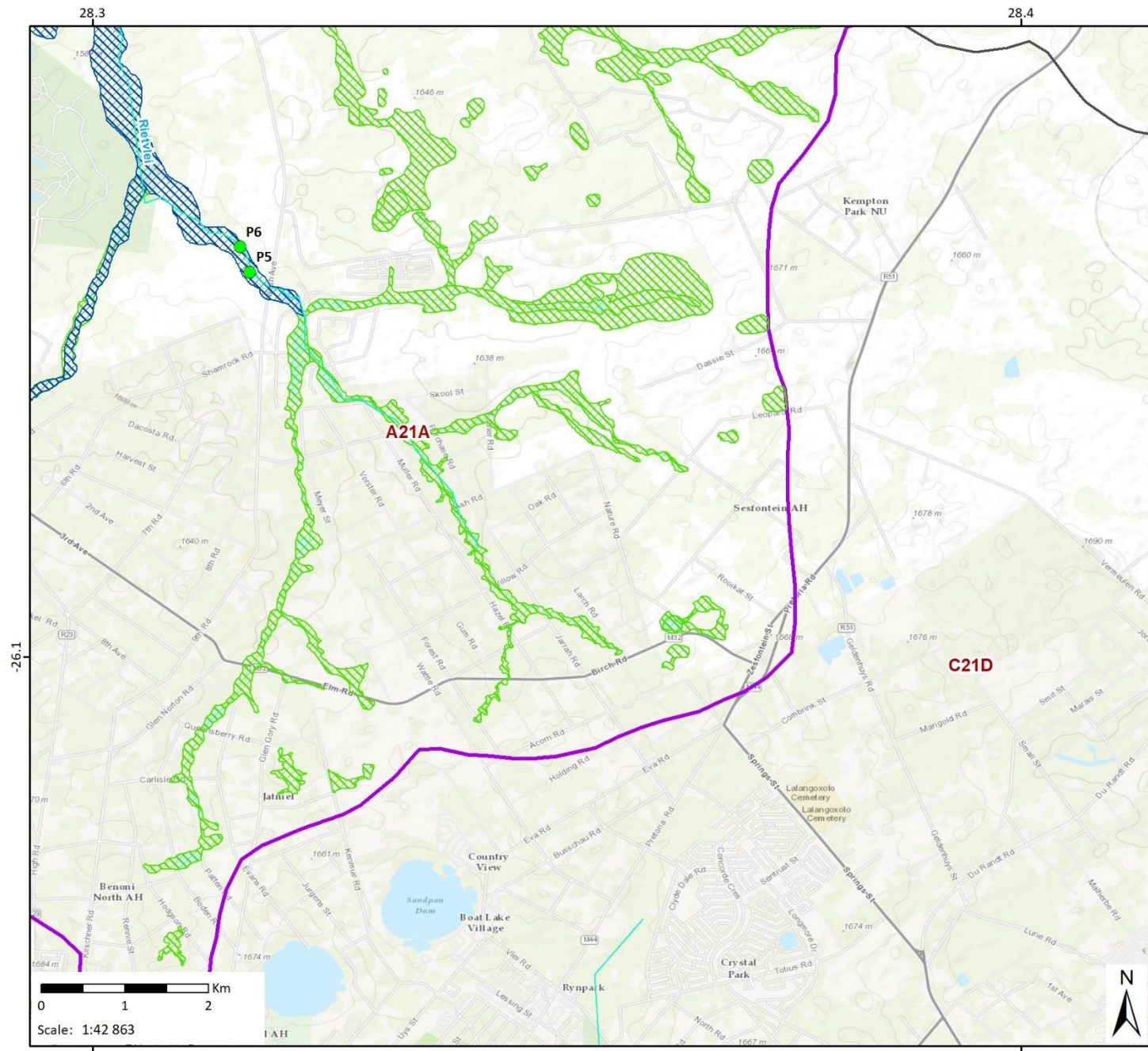
Data Sources:  
CSG; ESRI; WCS; GreenGab; CoE  
Coord System: GCS WGS 1984  
Datum: WGS 1984  
Units: Degree  
Ref: Existing and Proposed Structures (Overview)

Date: 2019/02/27  
EIMS Ref: 1230  
Compiled: PH  
Reviewed: BW  
Approved: LW



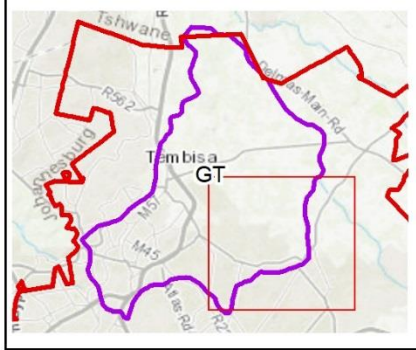
Figure 8: Existing and proposed structures in Rietvlei Catchment overview





**Rietvlei Catchment Existing and Proposed Structures (Inset 1)**  
 Ekurhuleni Wetland Rehabilitation Project

- Legend**
- City of Ekurhuleni
  - Rietvlei Catchment A21A
  - Rietvlei Wetland Areas
  - Rietvlei Targeted Wetland Areas
  - Rivers
  - Existing Structures
  - Proposed Structures

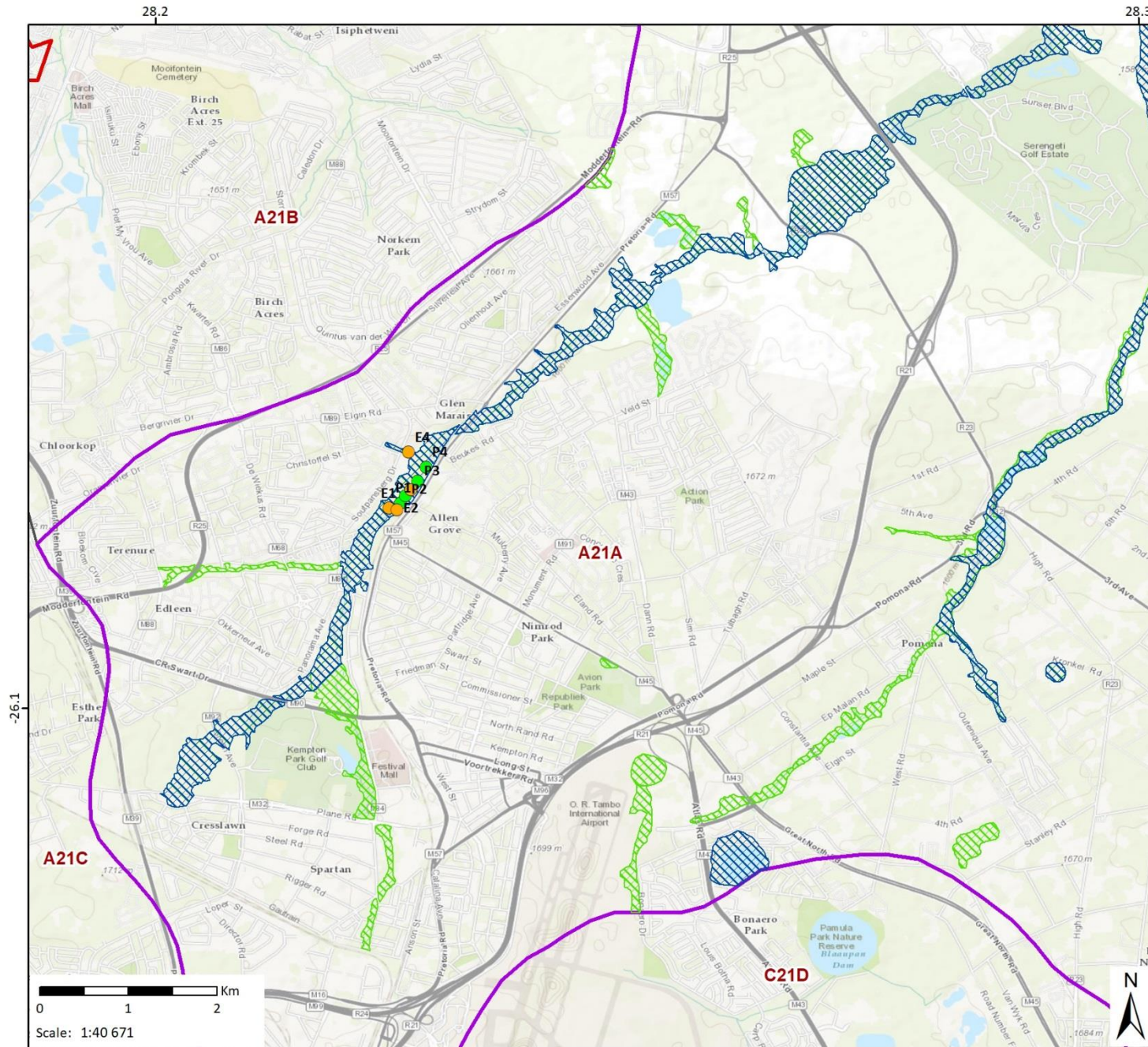


**Data Sources:**  
 CSG; ESRI; WCS; GreenGab; CoE  
 Coord System: GCS WGS 1984  
 Datum: WGS 1984  
 Units: Degree  
 Ref: Existing and Proposed Structures (Insets)

Date: 2019/02/27  
 EIMS Ref: 1230  
 Compiled: PH  
 Reviewed: BW  
 Approved: LW



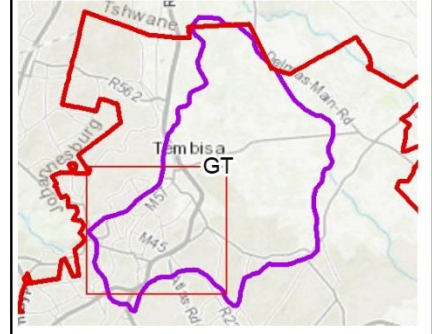
Figure 9: Existing and proposed structures in Rietvlei Catchment inset 1



**Rietvlei Catchment Existing and Proposed Structures (Inset 2)**  
Ekurhuleni Wetland Rehabilitation Project

**Legend**

- City of Ekurhuleni
- Rietvlei Catchment A21A
- Rietvlei Wetland Areas
- Rietvlei Targeted Wetland Areas
- Rivers
- Existing Structures
- Proposed Structures



**Data Sources:**  
CSG; ESRI; WCS; GreenGab; CoE  
**Coord System:** GCS WGS 1984  
**Datum:** WGS 1984  
**Units:** Degree  
**Ref:** Existing and Proposed Structures (Insets)

Date: 2019/02/27  
EIMS Ref: 1230  
Compiled: PH  
Reviewed: BW  
Approved: LW



Figure 10: Existing and proposed structures in Rietvlei Catchment inset 2

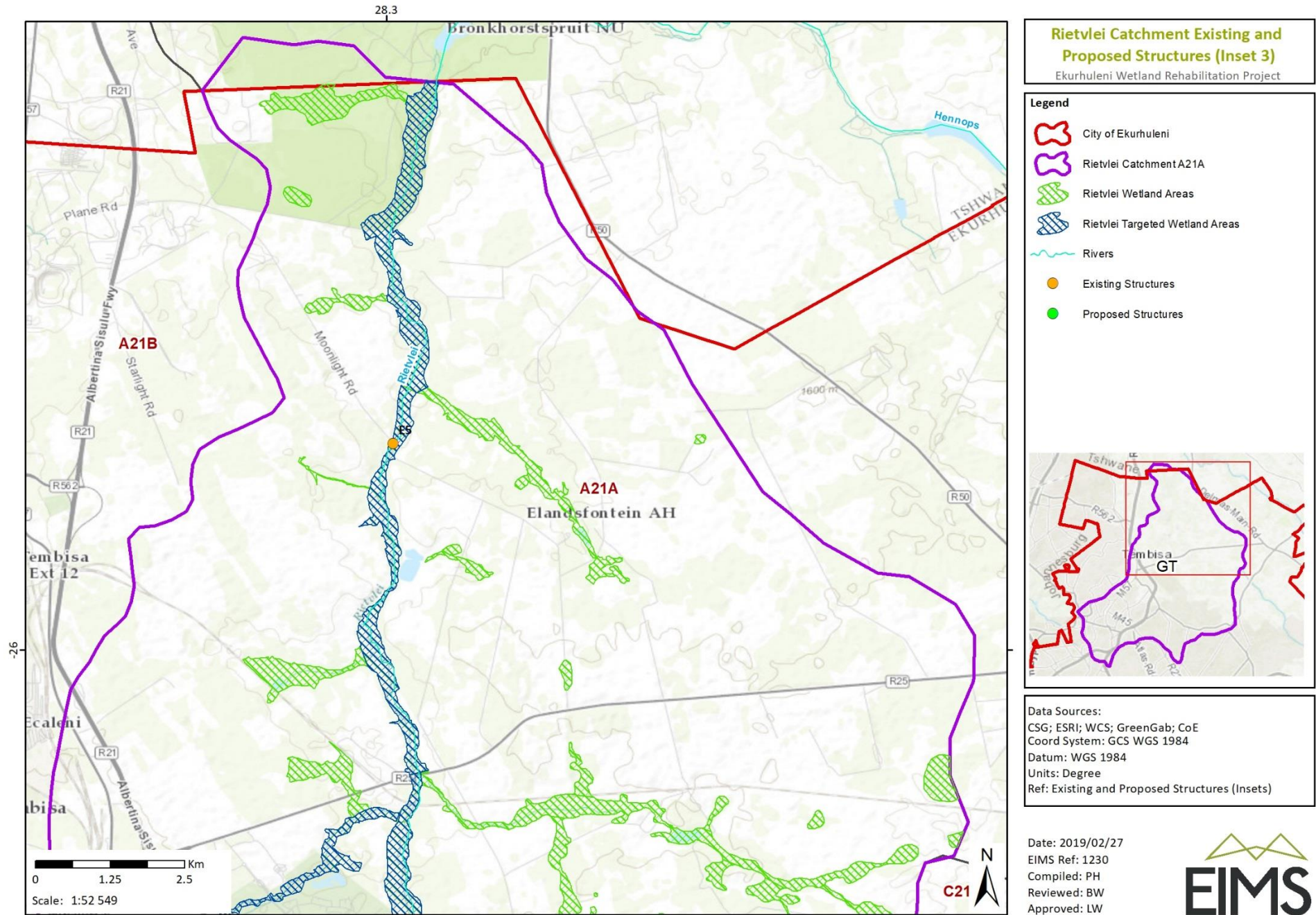


Figure 11: Existing and proposed structures in Rietvlei Catchment inset 3

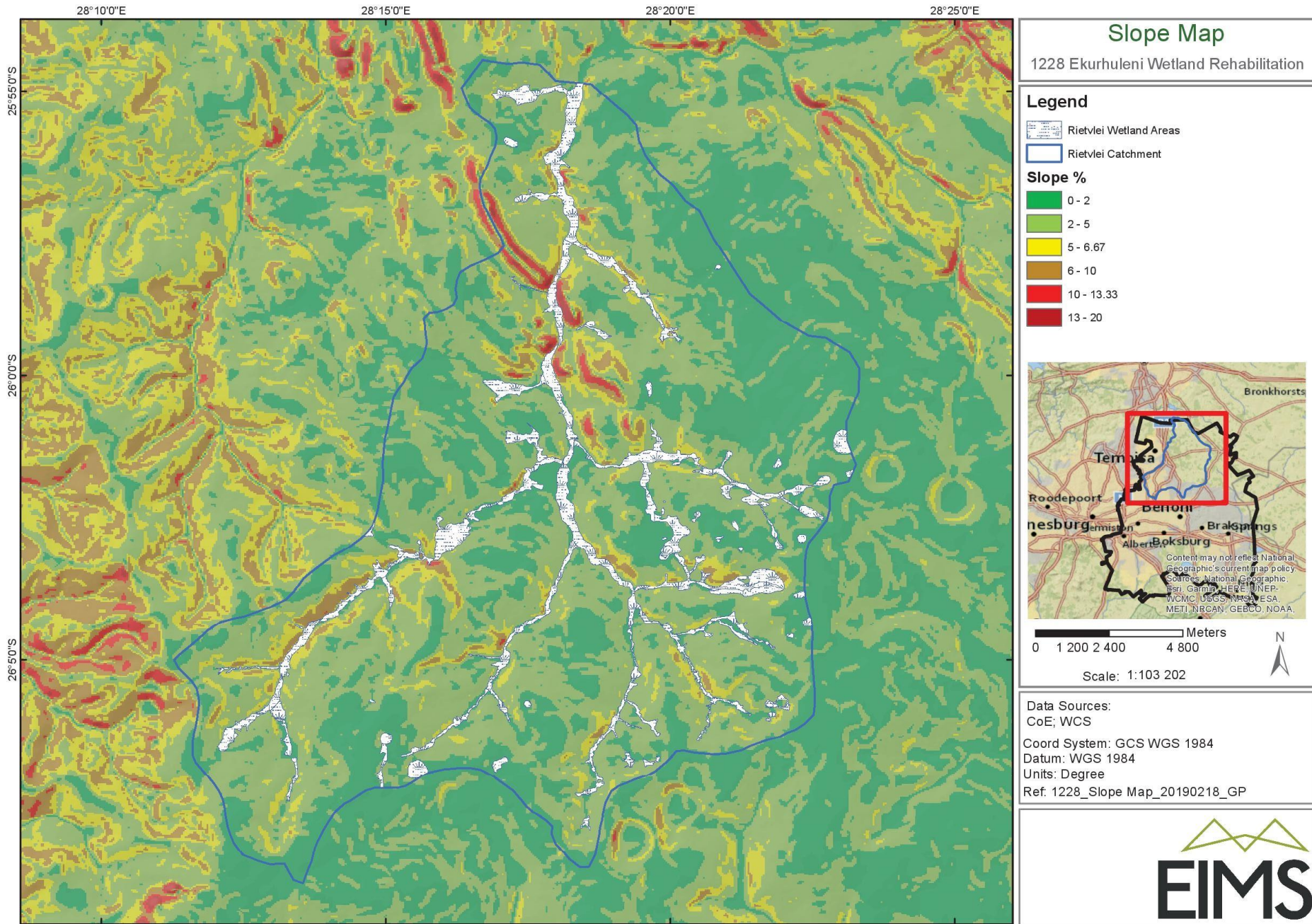


Figure 12: Slope of the Rietvlei Catchment

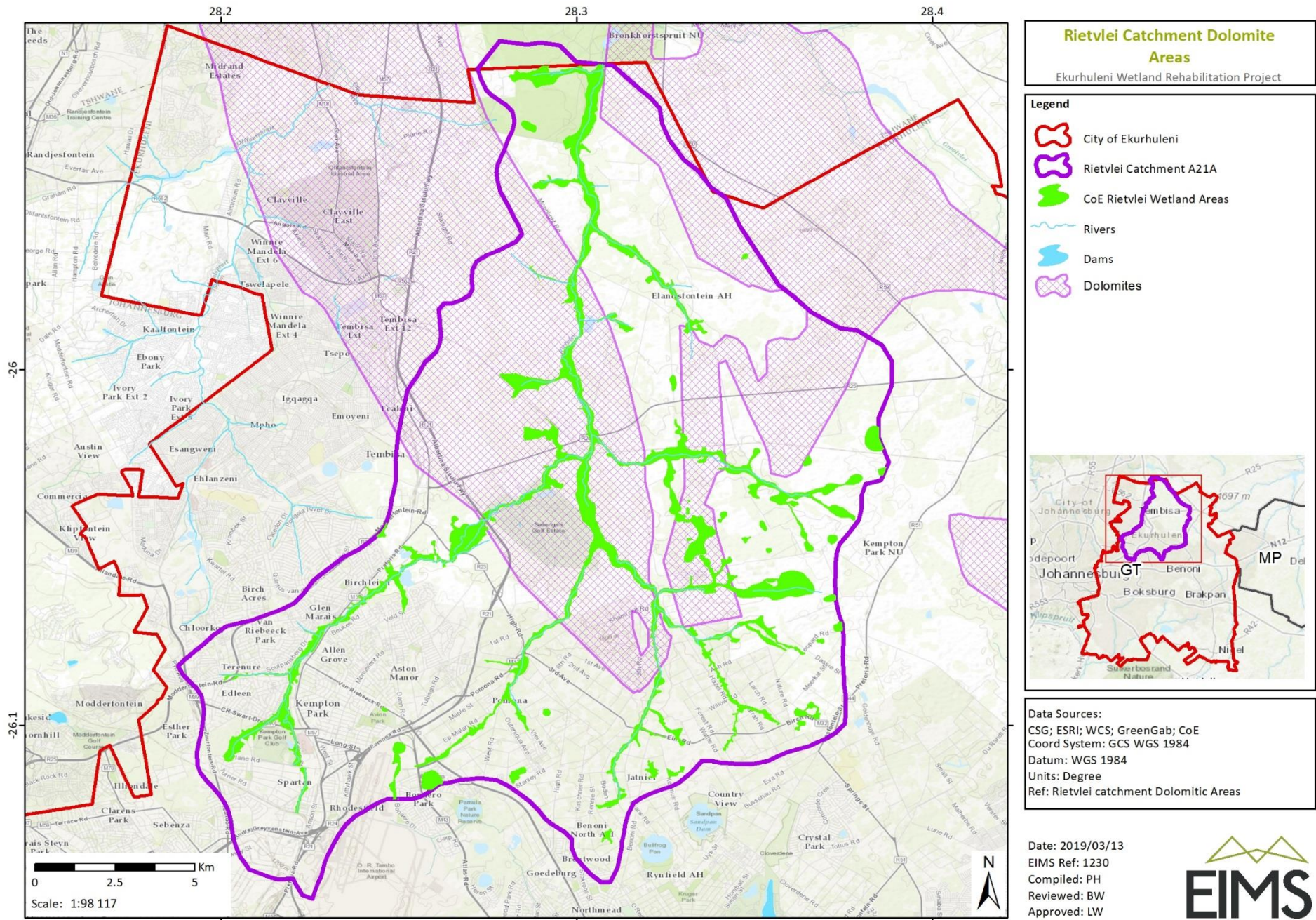


Figure 13: Dolomitic areas within the Rietvlei Catchment